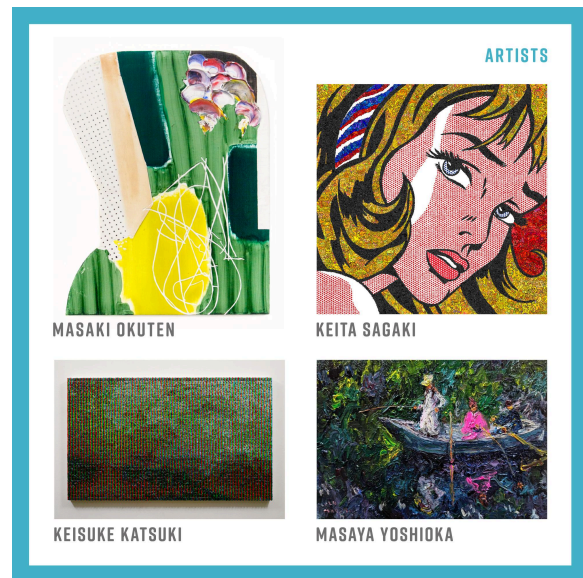




Minnano Gallery to present "Modal Landscape", an exhibition featuring the work of four artists - Masaki Okuten, Keisuke Katsuki, Keita Sagaki and Masaya Yoshioka.



Modal Landscape

July 3 Wed - 28 Sun, 2024

12:00-19:00

Closed: Mon, Tuesday, and July 17

<https://www.minnanogallery.com/modal-landscape-en>

Artists:

Masaki Okuten <https://www.instagram.com/masakiokuten/>

Keisuke Katsuki <https://www.keisukekatsuki.com/>

Keita Sagaki <https://sagakikeita.com/>

Masaya Yoshioka <https://www.instagram.com/masayayoshiokaPainter/>

MINNANO GALLERY | 2F 4-14-3 Higashiueno, Taito-ku, Tokyo

Press | Yoichi Tamori | tamori@minnanogallery.com | +81(0)3-6268-9658

Download Press Images

https://drive.google.com/drive/folders/14b2A6t6gqaY3q-W_5XbHaTVKPRkrsZMc?usp=sharing

Minnano Gallery is pleased to announce "Modal Landscape", an exhibition featuring the work of four artists - Masaki Okuten, Keisuke Katsuki, Keita Sagaki and Masaya Yoshioka. Featuring new, old and previously unpublished paintings and prints by four artists, the exhibition will present the core areas of each artist's creative practice with a minimum number of pieces. The works are not confined to a single specific theme, which is characteristic of group exhibitions in general, but rather stand next to each other, maintaining their own axis and independence.

By deliberately removing the context of art history from the canvas, Masaki Okuten shuts off the possibility of his work being overinterpreted influenced by the art historical background, yet focuses on pictorial expression in order to encourage people to enjoy the work with a wider and universal sense.

Keisuke Katsuki explores the fundamentals of seeing and being able to see, understanding the information systems and mediums that make such actions and phenomena possible, as well as the existence of light, and presenting works that reveal their existence.

Keita Sagaki finds the coexistence of dichotomous concepts such as life and death, sacred and profane, order and chaos, thereby visualising the fluid and complementary relationship between 'whole and part' and presenting the uncertainty of values and aesthetics that cannot be described from a single aspect.

Masaya Yoshioka repeatedly creates paintings of otherworldly landscapes and people's various activities, while staying close to their inner lives. The multiple series of works, which branch out and intertwine with each other, also intersect with our reality.

While establishing the different systems of each artist in the space, the exhibition also explores the way in which viewers can freely describe a character of the space as a whole, regarding the sequence of viewing experiences that occur when passing through each section.